

® **Al Fresco** BY VERONA

**OUTDOOR
PREMIUM
PORCELAIN**



2023/24

Collection

alfrescotiles.co.uk



Create your own outdoor oasis...

Al Fresco is brought to you by Verona, one of the UK's leading distributor of tiles, mosaics, outdoor porcelain and flooring.

Our premium porcelain outdoor tiles offer a stylish alternative to stone or concrete flagstones and our wood effect ranges create the look of high-end timber decking but with many added benefits such as good slip resistance.

Hardwearing and practical, these tiles have a 10 year guarantee, are simple to install and require no sealing - the perfect way to create a durable and low maintenance outdoor living space that's great for the whole family.

Available in a variety of colours and designs, our 20mm thick porcelain tiles are perfect for outdoor living.





Rainton Beige 600x600x20mm & 600x900x20mm

04-27

Design Inspiration

Get inspired and learn how to create the perfect space to relax, entertain and enjoy.

28-29

Installation Accessories

Everything you need to install your outdoor porcelain tiles to the highest standard.

30-37

Help & Advice

Our simple guide shows you the many ways you can install outdoor porcelain tiles.

Features & Benefits

Choosing a patio is not just about picking tiles which create a stylish place to entertain, to relax or to gather together with friends and family – practicality is also a key consideration.

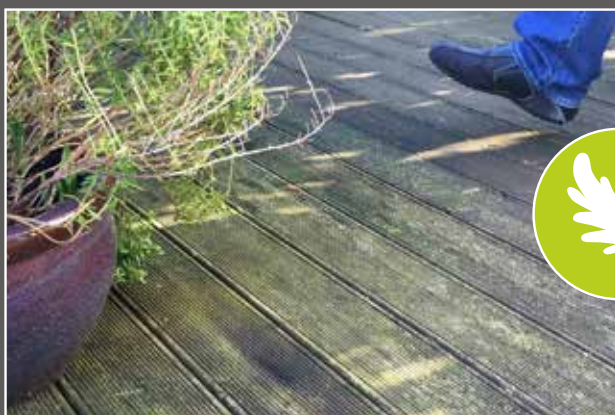
The beauty of Al Fresco porcelain is that it looks stunning, but is also extremely low maintenance so you can enjoy your outside spaces without worrying about the hassle of jet washing and labour intensive maintenance.

Here's why Al Fresco tiles are the perfect choice for your outdoor space.



Uniform Thickness

Al Fresco tiles are manufactured under extremely tight tolerances ensuring an even thickness and stable surface. They also feature precision cut rectified edges for a premium finish every time.



Algae & Moss Resistant

Unlike natural materials such as stone or timber, our outdoor Al Fresco tiles are resistant to algae and moss - no need to worry about your tiles turning green and becoming slippery!



Good Slip Resistance

Al Fresco outdoor porcelain tiles have a good slip rating of R11 making them safe and practical in all weather conditions. For more information on slip ratings, see page 43.



Frostproof

Natural stone and timber is porous and allows water to enter the surface. When this freezes, this can crack the material. Durable under extreme temperatures, Al Fresco outdoor porcelain is completely frostproof.



Easy to Clean

Al Fresco tiles are extremely low maintenance. To clean, simply brush with a mix of washing up liquid and water. For stubborn stains, use the Al Fresco Residue Remover. See page 39 for aftercare advice.



Fade Resistant

Perfect for sunny spots, Al Fresco tiles are created using high definition printing techniques with inks that will not fade or lose their colour.



Simple to Install

Create a traditional patio, or loose lay outdoor porcelain tiles onto grass, gravel or sand without the need for any specialist installation equipment. If you already have a solid surface, why not try our Pedestal Support System? For further detailed installation advice, see pages 34-39.



Abbey Black Multi 600x600x20mm

Abbey Black Multi



Create an authentic black and multi-shade slate effect look, but in a low maintenance tile that won't fade or deteriorate, whatever the British weather may bring.

Each tile features a varied mix of black and natural shades that are indistinguishable from real slate making it a practical and low maintenance option for a variety of outdoor spaces. Remember to always mix up your tiles prior to fixing to create a pleasing blend of shades.

Available size: 600 x 600 x 20mm | P10825 | 2.78 pieces p/m²

See specification table on page 42 for more information



Adlington White 600x600x20mm

Adlington White



Adlington features a fresh and light white colouring mixed with traces of natural tones that's ideal for creating an illusion of space in small gardens.

Coordinate with statement pops of colour and a mixture of florals for a bright and exciting space, or for a more traditional Mediterranean look add terracotta pots and deep aqua blue tones reminiscent of the sea and summer sky. Fade resistant in strong sunlight and resistive to algae and moss, Adlington will look perfect for many years to come.

Available size: 600 x 600 x 20mm | P10827 | 2.78 pieces p/m²

See specification table on page 42 for more information

Baslow Black

Sleek and sophisticated, the rich black colour of Baslow will add a contemporary edge to any outdoor setting.

Crafted from high-quality porcelain, Baslow Black is built to withstand the elements, ensuring long-lasting performance and minimal maintenance. From patios to pathways, Baslow Black creates a bold and striking statement that stands the test of time.



Baslow Black 600x600x20mm



Available size: 600 x 600 x 20mm | P12658 | 2.78 pieces p/m²
Available size: 600 x 900 x 20mm | P12659 | 1.85 pieces p/m²

See specification table on page 42 for more information



Baslow Black 600x900x20mm



Eyam Beige 600x900x20mm



Eyam Beige

The soft and warm tones of Eyam Beige create a welcoming and soothing ambiance - a perfect complement to any natural surroundings.

Crafted from durable porcelain, Eyam Beige is resistant to fading, stains, and harsh weather conditions, ensuring long-lasting beauty and functionality.



Available size:

600 x 900 x 20mm | P12662 | 1.85 pieces p/m²

See specification table on page 42 for more information

Harewood Grey

If you love the look of natural wood or timber decking, then Harewood is the perfect collection to create a hard wearing and durable patio area.

Unlike timber, our porcelain tiles do not require sealing to protect them and will not rot or become slippery in wet weather. Contemporary Grey creates a cool and stylish space.



Harewood Grey available size:
300 x 1200 x 20mm | P11187 | 2.78 pieces p/m²





Harewood Grey 300x1200x20mm

Newby Grey Multi

Featuring a softer blend of shades than Abbey Black Multi, Newby Grey Multi is perfect for creating a relaxing and rustic outdoor space.

Each tile features a varied blend of soft grey and natural shades, carefully crafted from durable porcelain to look just like natural stone but without the need for sealing or excessive maintenance. Relax and enjoy your time outdoors on a beautiful patio area, rather than investing all your time with upkeep. Remember to always mix up your tiles prior to fixing to create a pleasing blend of shades.



Available size: 600 x 600 x 20mm
P10826 | 2.78 pieces p/m²

See specification table on page 42 for more information



Newby Grey Multi 600x600x20mm

Oakworth

Designed to withstand the elements, Oakworth offers the perfect combination of strength and style.

Providing a slip-resistant surface that is easy to clean and maintain, choose from classic Ivory or contemporary Grey.



Oakworth Grey 600x600x20mm

Oakworth Grey available size: 600 x 600 x 20mm | P12660 | 2.78 pieces p/m²

Oakworth Ivory available size: 600 x 600 x 20mm | P12661 | 2.78 pieces p/m²

See specification table on page 42 for more information



Oakworth Ivory 600x600x20mm



Peckover Anthracite & Silver 600x1200x20mm



Peckover



Create a contemporary aesthetic outside with a weathered concrete-effect tile.

Peckover in Silver and Anthracite is a striking large format tile in a 600x1200x20mm size that brings with it a sense of charm through its worn appearance. Create expansive spaces by using one colourway throughout open plan areas, or combine the two shades to create zoned areas where dining and entertaining spaces are subtly defined.

Peckover Anthracite available size: 600 x 1200 x 20mm | P12007 | 1.39 pieces p/m²

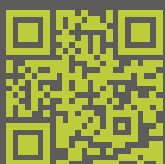
Peckover Silver available size: 600 x 1200 x 20mm | P12008 | 1.39 pieces p/m²

See specification table on page 42 for more information

Rainton

Transform your outdoor living areas into an oasis of style and serenity with Rainton.

Choose from sleek light grey or soothing beige hues to create a calming and inviting atmosphere. Crafted from durable porcelain, our outdoor tiles offer strength and resistance to weather and wear.



Rainton Beige 600x600x20mm & 600x900x20mm

Rainton Beige available in size: 600 x 600 x 20mm | P12869 | 2.78 pieces p/m²
600 x 900 x 20mm | P12870 | 1.85 pieces p/m²
Rainton Light Grey available in size: 600 x 600 x 20mm | P12816 | 2.78 pieces p/m²
600 x 900 x 20mm | P12817 | 1.85 pieces p/m²

See specification table on page 42 for more information



Rainton Light Grey 600x600x20mm & 600x900x20mm

Rolston Grey

Elevate your outdoor space with Rolston, a low maintenance tile that won't fade or deteriorate, whatever the British weather may bring.

With stunning subtle veining and a classic matt grey finish, it's the perfect choice for patios, pathways and more. Choose from 60x90 or 60x60 sizes, or even combine for an individual and unique look.



Available size:

600 x 600 x 20mm | P12818 | 2.78 pieces p/m²

600 x 900 x 20mm | P12819 | 1.85 pieces p/m²

See specification table on page 42 for more information



Rolston Grey 600x600x20mm & 600x900x20mm

Wilsden Slate Black

Natural beauty meets durability with Wilsden Slate Black.

Showcasing an authentic texture, Wilsden mimics the timeless appeal and organic charm of natural slate, whilst also providing the durability and hard-wearing properties of porcelain. Create a captivating outdoor oasis that effortlessly combines style and practicality.



Wilsden Slate Black 600x900x20mm



Available size: 600 x 600 x 20mm | P12663 | 2.78 pieces p/m²
Available size: 600 x 900 x 20mm | P12664 | 1.85 pieces p/m²

See specification table on page 42 for more information



Wilsden Slate Black 600x600x20mm



Introducing Al Fresco XL a new range of extra large format 100x100cm indoor and outdoor porcelain tiles.

Available in a range of 4 stunning colourways, these new XL sizes offer your customers minimal grout lines for a seamless, stylish finish. Each colourway comes in a 1cm thickness suitable for indoors and a coordinating 2cm thickness suitable for outdoors, perfect for creating a seamless extension of the indoor living space into the garden.



Atlanta White
 1000 x 1000 x 20 mm | P13566 | 1 pieces p/m²
 1000 x 1000 x 10 mm | P13562 | 1 pieces p/m²



Atlanta Grey
 1000 x 1000 x 20 mm | P13567 | 1 pieces p/m²
 1000 x 1000 x 10 mm | P13563 | 1 pieces p/m²



Atlanta Cream
 1000 x 1000 x 20 mm | P13569 | 1 pieces p/m²
 1000 x 1000 x 10 mm | P13565 | 1 pieces p/m²



Atlanta Black
 1000 x 1000 x 20 mm | P13568 | 1 pieces p/m²
 1000 x 1000 x 10 mm | P13564 | 1 pieces p/m²

See specification table on page 42 for more information

Co-ordinating
indoor & outdoor
tiles available

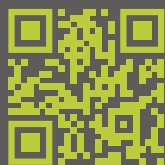
Atlanta White 1000x1000x10mm
Atlanta White 1000x1000x20mm

Al Fresco Opus Packs

Offering a variety of tile sizes, our new Opus Packs allow you to create captivating patterns and designs in outdoor spaces.

Crafted from high-quality porcelain, these tiles are built to withstand the harshest elements, ensuring long-lasting beauty and durability. From stunning patios to intricate pathways, our Opus Pack tiles make a bold statement that embrace style and functionality. Each pallet includes 18 x 600x900s, 18 x 600x600s, 18 x 300x600s, 18 x 300x300s.

Tideswell Grey (P12570)



Ellerby White (P12709)



Padley Light Grey (P12573)



See specification table on page 42 for more information



Installation Accessories

From small and intimate patios to large scale landscaping projects, the AI Fresco collection offers a comprehensive range of installation accessories to complete any project. If you are fixing your tiles with mortar, **Instarmac Pro-Prime Slurry** is an absolute essential to ensure your tiles bond to the base below. Use **AI Fresco Tile Protector** to create a protective seal against installation residues such as mortar and grouting compounds, and for any stubborn stains after installation, use the **AI Fresco Residue Remover**. For a perfect finish, use **Instarmac ProPave Brush-In Grout** to infill joints with minimal effort. An alternative installation method is our **Pedestal Support System** which creates an elevated patio area without the need for lots of equipment. The patio can also be easily moved around or adjusted as the tiles are not fixed with adhesive.



Slurry Primer A10200

- Provides an exceptional bond between outdoor porcelain tiles and a wet mortar bed
- Just add water on-site
- Quick and easy application
- 20kg paper bag covers 15m²*
- NBS Plus registered
- BS 7533 compliant

Available in a handy twin pack!



Tile Protector

- Apply before grouting to create a protective seal against cement, grout & jointing compounds
- Apply after grouting to protect both exterior and interior porcelain tiles against the dirt of everyday living
- 1 Litre covers approx 25m²*



Residue Remover

- Rapid action cleaner for removing cement residues, grout stain and other similar deposits
- Suitable for exterior and interior porcelain tiles
- Use diluted or concentrated to remove a variety of stains and residues
- 1 Litre covers approx 25m²*

A10082

* Coverage is provided as a guide only and reflects typical application without any wastage. It should not be used as an exact material calculation.

** Based on 600x600mm tile, 20mm joint depth & 3mm joint width.

Brush-In Grout

- Use to fill the gaps between tiles for a seamless finish
- Fast and easy application
- Permeable - allows drainage
- Walk on in just 24 - 48 hours
- Use in all weather
- Resistant to frost and extreme weather conditions
- No waste - left over material can be re-used
- 15kg tub covers up to 25m²**



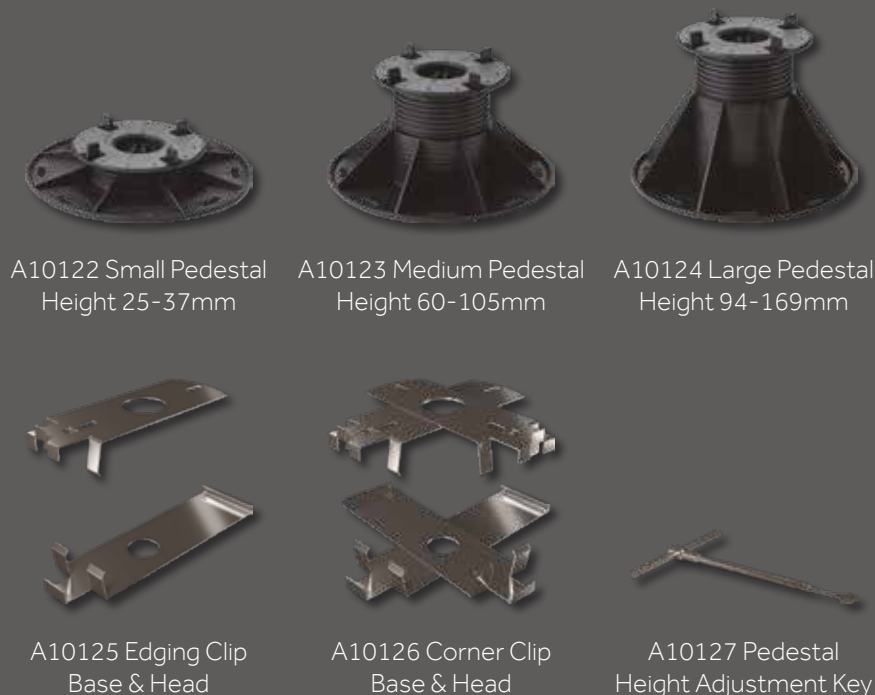
A10201
Black



A10203
Grey



A10202
Buff



A10122 Small Pedestal
Height 25-37mm

A10123 Medium Pedestal
Height 60-105mm

A10124 Large Pedestal
Height 94-169mm

A10125 Edging Clip
Base & Head

A10126 Corner Clip
Base & Head

A10127 Pedestal
Height Adjustment Key

Pedestals

- Create a patio without the need for lots of equipment
- Pedestals allow for drainage and you can hide cables and equipment underneath
- As the tiles are not attached with adhesive, you can easily move them around
- Can be laid over any solid surface such as existing patios, concrete or balconies
- Self levelling pedestal head creates a stable surface on uneven ground
- Create a clean step front to raised patios using the edge & corner clips
- Easily adjust the patio level using the adjustment key

Design Inspiration

When it comes to laying a patio area in your garden, many people choose a regular grid of square or rectangular slabs, all the same size and colour. It's surprisingly easy to create a practical yet beautiful space by playing with different textures, colours and laying patterns. Here are some simple yet creative ideas to inspire you and help you design your perfect space.

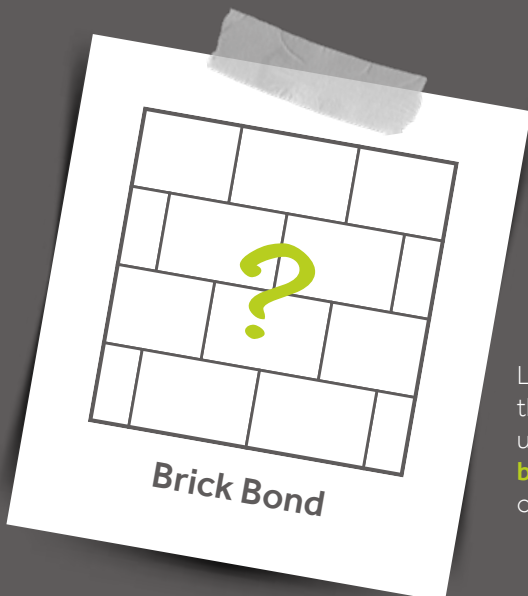
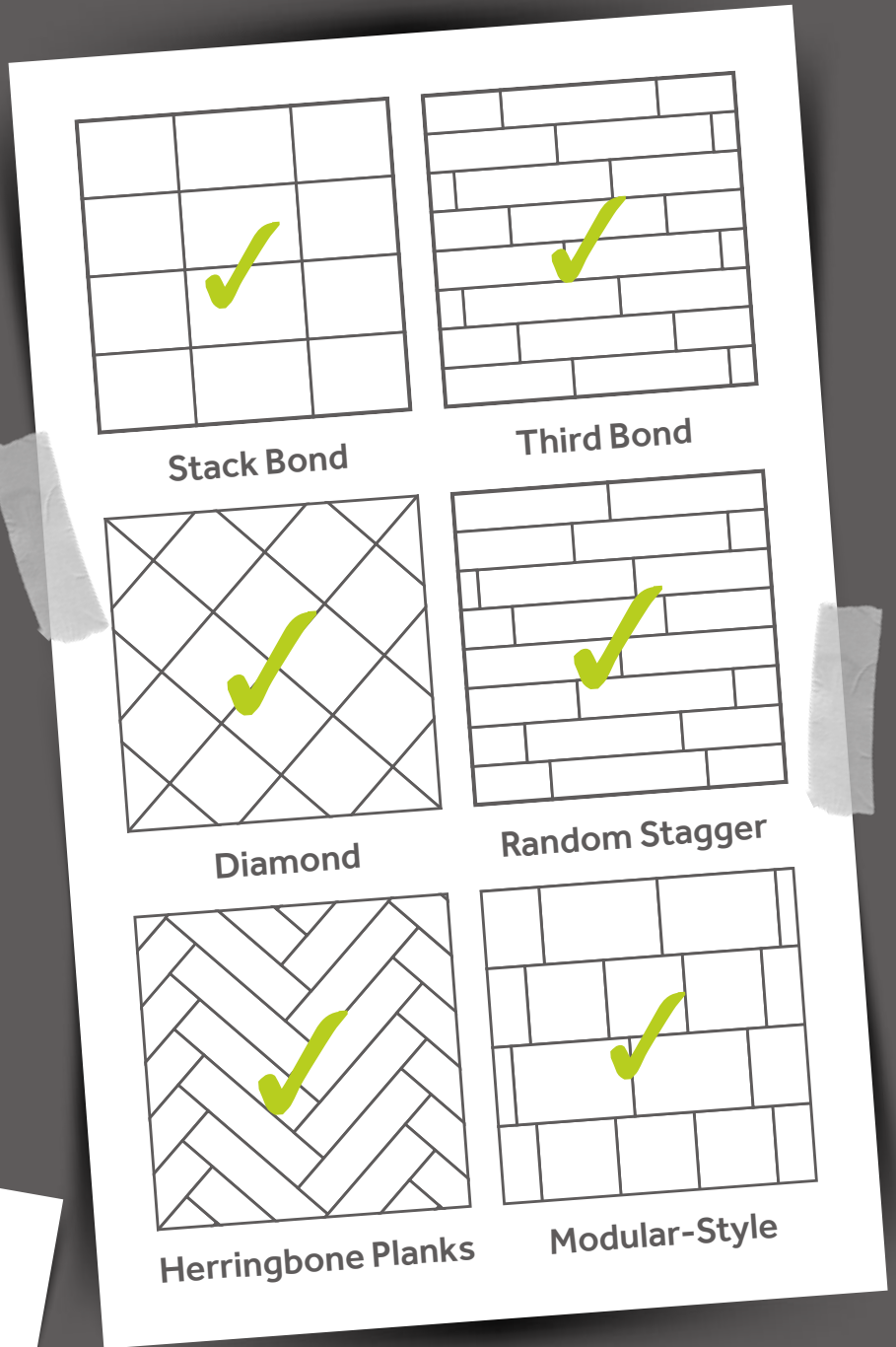
Stack bond is the simplest and most common way to lay a patio. Coordinate your grout colour for a seamless look, or use a contrasting colour to add a simple statement.

Third bond is a great way to lay planks and larger tiles for a contemporary look. Staggering the tiles in this way creates an organic feel and helps to define the shape of the tiles.

You can create an interesting twist on a simple pattern with the **diamond** layout - perfect for square tiles.

Using a **random stagger** is a great way to create a natural look and the **herringbone** pattern is a good way to create a sense of space in small areas - both of these layouts work especially well for planks.

Some of our AI Fresco collection features both square and rectangle tiles in the same design and colour - you can mix these together in rows to create a **modular-style** effect which is really effective in larger spaces.



Larger porcelain tiles inherently have a slight curvature to them, which means that fixing them in a **brick bond** layout can make the floor appear slightly uneven. Although we don't recommend it, if you try laying your tiles in a **brick bond** pattern and you're happy with the level of evenness between each row of tiles then there's no reason why you can't lay them in this way.



Zone your space



Mix & match sizes



Create elegant walkways



Add modular interest



Step up your style

Installation Advice

With the right materials and preparation, you can easily install your own AI Fresco tiles. Follow these simple steps to create your own seamless indoor & outdoor space. Installing your own AI Fresco tiles is both rewarding and satisfying but before you begin, be sure you have the correct tools and the appropriate protective equipment. Always wear gloves and safety footwear when working with outdoor porcelain tiles. Handle your tiles with care to avoid breakages and seek assistance when lifting.

How to install a porcelain patio on wet mortar



Step One

Firstly, mark out the area where you want your patio to be with posts and string. Measure the length and width of your area and multiply these values together to calculate the square meterage. If your area is not a straight forward square or rectangle, break each area down into smaller rectangles. Calculate each rectangle, then add these values together. Once you've calculated the total square meterage, multiply this number by 1.1. This adds 10% extra on to your total to allow for cuts and wastage.



Step Two

Although outdoor porcelain tiles don't need to be sealed to protect them from water penetration, you may find the installation process easier if you coat the tiles before installation with AI Fresco Tile Protector. This prevents mortar and slurry from becoming ingrained in the surface of the tiles and makes cleaning up after installation even easier. Apply to the surface of the tile with a foam roller, taking care not to coat the edges as this can prevent the grout from bonding.



Step Three

Before you lay your tiles, you will need to prepare the ground, by digging to a depth of around 150-200mm. Your ground should have a slight slope to allow for drainage. If you're tiling up to the edge of a house or wall, the slope should run away from the structure.



Step Four

Fill with hardcore (gravel and crushed hard rock) to a depth of 100-150mm and use a rake to distribute the mixture. Compress the hardcore using a whacker power plate, building up in layers. Remember to check that your ground still has a slight slope.

Scan here with your smart phone to view our detailed installation video



Step Five

Add a layer of mortar on top of the compressed hardcore. We recommend 4 parts sand to 1 part cement.



Step Six

Place 7 litres of clean water in a suitable container. Add UltraScape Pro-Prime powder slowly and mix for 3 to 5 minutes to create a smooth lump-free slurry. Coat the underside of the first tile with priming slurry. Using priming slurry is an essential step to ensure that your tiles bond to the mortar bed.



Step Seven

Place the tile into position, using a corner as a starting point - for example next to a wall or house. Press into place and use a rubber mallet and spirit level to secure and adjust the level, remembering to take drainage into consideration. Continue to lay tiles in this way leaving a 3-5mm gap between each one. Use a bucket of water and sponge to clean up any mortar or slurry as you go.



Step Eight

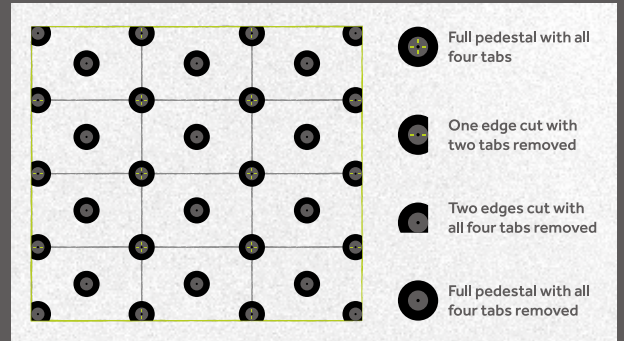
Avoid walking on your newly laid patio for a minimum of 24-48 hours to allow it to dry and strengthen. If you wish to infill any joint gaps, we recommend using ProPave Brush-In Grout designed for outdoor porcelain tiles. Use a brush to mix over the joints, gradually and evenly filling them all in. Once the joints are filled, use a pointing trowel to firm the grout into place. Add more grout if needed to create a clean and level finish.

How to create a raised patio with pedestals



Step One

Pedestals are a great way to create a patio area without the need for lots of messy equipment or tools. They can be laid on top of any solid surface such as existing patios, tarmac driveways or even balconies. It's a good idea to place a layer of weed membrane down under the pedestals so that you don't get weeds growing up through the gaps. If your sub-surface is completely solid such as a concrete slab or balcony, you can skip this step. If you don't already have a solid sub-base, you will need to create one before you begin installation.



Step Two

Before you begin, you will need to calculate how many pedestals you need. The easiest way to do this, is to measure and sketch out your patio plans. The spacer tabs in the top of the pedestal head hold up to four tile corners in place. For the edges, you will need to remove two of the spacer tabs, and for corners you will need to remove all of the spacer tabs so that the tile sits flush on top. For larger tiles you may wish to place an additional pedestal without spacer tabs in the centre for extra support.



Step Three

Prepare your pedestals for the edges and corners. For the edges, cut along the base line to remove one side. For the corners, cut along an additional base line to remove two sides and create a right angle. To remove the tabs, simply snap and pull with your fingers or pliers.



Step Four

Use a corner as a starting point such as next to a wall, house or fence, and place the first pedestal. Place three more pedestals in a grid layout to fit the measurements of your tile. Twist the pedestal by hand or with the adjustment key to alter the height. Align the pedestal head so that the cross shaped keyhole is at a right angle to the tile corner. Place the tile on top of the pedestals ensuring that the corners sit flush into the tabs.



Step Five

Continue to lay your tiles, adjusting the height and level as you go by inserting the adjustment key between the tile joints and twisting. Once the whole pedestal patio area is complete, review the level again and adjust if needed.



Step Six

If you need to create a step front, measure and cut your tile to the correct height (see page 32 for cutting advice). Temporarily remove any tiles from the main patio area that lay on top of an edge or corner and prepare the edging clips by laying one piece underneath the pedestal, and one piece on top. The top piece should slot on top of the spacer tabs.



Step Seven

Place the cut tile piece in between the clips to hold it in place. If you wish, you can secure the edging clips with silicone or glue but this is not essential. Repeat this process for the corner clips until your step front is completed.



Step Eight

Place your tiles back in place on top of the pedestals to complete the look.

Scan here with your smart phone to view our detailed installation video



How to cut outdoor porcelain tiles



Step One

Outdoor porcelain tiles are super strong and cannot be cut using traditional hand tools. In order to minimise breakages and spoiled cuts, we recommend using a water fed cutter with a diamond blade. This will also help to minimise dust. Always wear gloves, safety footwear, goggles & respiratory protection when using cutting equipment. Handle your tiles with care to avoid breakages and seek assistance when lifting.



Step Two

Measure and mark a line where you would like to cut the tile. Cut from the top surface with the blade running at half-revs. Bring the blade into contact with the tile. As the blade bites the tile, increase the revs if necessary and progress along the marked line. Ensure the blade is water fed throughout and remains evenly balanced. Do not attempt to plunge the blade through the tile in one go - progress steadily and repeat the process until the tile is cut.

Different options for step edges



Option One

Simply lay one tile on top of the other. This is a simple method that does not require any additional materials, however one edge of the tile will be exposed.



Option Two

Mitre the edges at 45° so both tile edges are hidden at the joint. This process is more labour intensive but creates a premium finish.



Option Three

Disguise the tile edges by creating a border with timber sleepers. This is a good technique to coordinate with timber raised beds around borders.

How to lay stepping stones or staggered patios



Step One

It's easy to create walkways and staggered patios by loose laying your outdoor tiles. If your surface is solid and secure, outdoor porcelain tiles can be simply placed on the ground. If the ground is soft or uneven in any way, you will need to make the surface stable.



Step Two

To make a stable surface, create a base with a layer of sharp sand or fine gravel, then place your tile on top. If you're laying your tiles on to grass, you may wish to cut away a square of turf and dig down slightly so that the tile lays flush with the surface.

Aftercare



Clean & Protect

Maintaining your porcelain tiles is easy, simply sweep away any loose dirt regularly, and brush with warm soapy water for an extra clean as and when needed. Outdoor porcelain tiles do not require sealing, however you may wish to apply Al Fresco Tile Protector after grouting to protect your tiles against the dirt of everyday living.



Stains & Residues

For any mild stains and residues, dilute 1 part Al Fresco Residue Remover in 4 parts water. Dampen a cloth or sponge and wipe thoroughly. For tougher stains and residues, dilute 1 part Al Fresco Residue Remover with 1 part water. Apply liberally over the surface of the tile and agitate with a scrubbing brush. Leave for 5-10 minutes before rinsing with clean water. For extremely stubborn stains, use undiluted Residue Remover and agitate with a scrubbing brush. Always rinse the surface with clean water afterwards.

For further installation advice, or if you have any questions, get in touch!

Tel: 0113 244 4984
info@alfrescotiles.co.uk

Scan here with your smart phone to view our detailed installation video



Product Summary



Abbey Black Multi
600x600x20mm



Adlington White
600x600x20mm



Baslow Black
600x600x20mm



Baslow Black
600x900x20mm



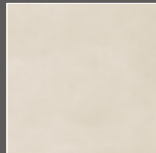
Eyam Beige
600x900x20mm



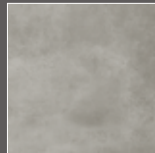
Harewood Grey
300x1200x20mm



Newby Multi
600x600x20mm



Oakworth Ivory
600x600x20mm



Oakworth Grey
600x600x20mm



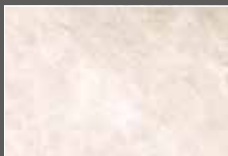
Peckover Anthracite
600x1200x20mm



Peckover Silver
600x1200x20mm



Rainton Beige
600x600x20mm



Rainton Beige
600x900x20mm



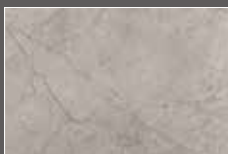
Rainton Light Grey
600x600x20mm



Rainton Light Grey
600x900x20mm



Rolston Grey
600x600x20mm



Rolston Grey
600x900x20mm



Wilsden Slate Black
600x600x20mm



Wilsden Slate Black
600x900x20mm

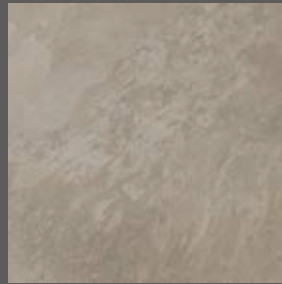
Al Fresco XL



Atlanta White
1000x1000x10mm
1000x1000x20mm



Atlanta Grey
1000x1000x10mm
1000x1000x20mm



Atlanta Cream
1000x1000x10mm
1000x1000x20mm



Atlanta Black
1000x1000x10mm
1000x1000x20mm

Opus Packs



Ellerby White
300x300x20mm



Ellerby White
300x600x20mm



Ellerby White
600x600x20mm



Ellerby White
600x900x20mm



Padley Light Grey
300x300x20mm



Padley Light Grey
300x600x20mm



Padley Light Grey
600x600x20mm



Padley Light Grey
600x900x20mm



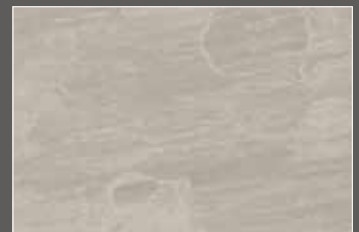
Tideswell Grey
300x300x20mm



Tideswell Grey
300x600x20mm



Tideswell Grey
600x600x20mm



Tideswell Grey
600x900x20mm

Specification

OUTDOOR | Porcelain

Code	Description	Width (mm)	Length (mm)	Thickness (mm)	Pieces per m ²	Box Quantity	Single Tile Weight (kg)	Slip Resistance	Page
P10825	Abbey Black Multi	600	600	20	2.78	2	15.50	R11	6
P10827	Adlington White	600	600	20	2.78	2	15.50	R11	7
P12659	Baslow Black	600	900	20	1.85	1	25.00	R11	8-9
P12658	Baslow Black	600	600	20	2.78	2	16.50	R11	8-9
P12662	Eyam Beige	600	900	20	1.85	1	25.00	R11	10-11
P11187	Harewood Grey	300	1200	20	2.78	2	17.15	R11	12-13
P10826	Newby Grey Multi	600	600	20	2.78	2	15.50	R11	14-15
P12661	Oakworth Ivory	600	600	20	2.78	2	16.50	R11	16-17
P12660	Oakworth Grey	600	600	20	2.78	2	16.50	R11	16-17
P12007	Peckover Anthracite	600	1200	20	1.39	1	32.34	R11	18-19
P12008	Peckover Silver	600	1200	20	1.39	1	32.34	R11	18-19
P12870	Rainton Beige	600	900	20	1.85	1	25.00	R11	20-21
P12869	Rainton Beige	600	600	20	2.78	2	16.50	R11	20-21
P12817	Rainton Light Grey	600	900	20	1.85	1	25.00	R11	20-21
P12816	Rainton Light Grey	600	600	20	2.78	2	16.50	R11	20-21
P12819	Rolston Grey	600	900	20	1.85	1	24.50	R11	22-23
P12818	Rolston Grey	600	600	20	2.78	2	16.25	R11	22-23
P12664	Wilsden Slate Black	600	900	20	1.85	1	25.00	R11	24-25
P12663	Wilsden Slate Black	600	600	20	2.78	2	16.50	R11	24-25

AI Fresco XL | INDOOR/OUTDOOR | Porcelain

Code	Description	Width (mm)	Length (mm)	Thickness (mm)	Pieces per m ²	Box Quantity	Single Tile Weight (kg)	Slip Resistance	Page
P13562	Atlanta White	1000	1000	10	1	2	23.23	R11	26-27
P13566	Atlanta White	1000	1000	20	1	1	46.24	R11	26-27
P13565	Atlanta Cream	1000	1000	10	1	2	23.23	R11	26-27
P13569	Atlanta Cream	1000	1000	20	1	1	46.24	R11	26-27
P13563	Atlanta Grey	1000	1000	10	1	2	23.23	R11	26-27
P13567	Atlanta Grey	1000	1000	20	1	1	46.24	R11	26-27
P13564	Atlanta Black	1000	1000	10	1	2	23.23	R11	26-27
P13568	Atlanta Black	1000	1000	20	1	1	46.24	R11	26-27

OUTDOOR | Opus

Code	Description	Width (mm)	Length (mm)	Thickness (mm)	M ² Per Pallet	Slip Resistance	Page
P12709	Ellerby White Glazed Opus	300	300	20	21.06	R11	28-29
		300	600				
		600	600				
		600	900				
P12573	Padley Light Grey Glazed Opus	300	300	20	21.06	R11	28-29
		300	600				
		600	600				
		600	900				
P12570	Tideswell Grey Glazed Opus	300	300	20	21.06	R11	28-29
		300	600				
		600	600				
		600	900				

Important Information

Dimensions, colour and shading

Although we have made every effort to display the colours accurately, we cannot guarantee that this printed brochure directly reflects the colours of the actual product. As products can vary slightly from these images, we advise you to view a sample for true colour representation. Check out our website to find your nearest stockist. Please note that tiles are created in batches and some shade variation may occur between batches. Products with the same colour name, such as "grey", are not necessarily the same exact colour shade as another product with "grey" in its name. Please do not order using colour names or product names as your guide to colour. We manufacture our tiles to extremely tight tolerances, however due to the nature of the manufacturing process, sizes, weights, capacities, dimensions and measurements indicated may vary slightly.

Health and safety

Installing your own AI Fresco tiles is both rewarding and satisfying but you could be exposed to various risks if the correct safe methods of work as described in this booklet are not followed. Before you begin, be sure you have the appropriate protective equipment.

- Always wear gloves and safety footwear.
- Always wear goggles & respiratory protection when using cutting equipment.
- Handle your AI Fresco tiles with care to avoid breakages and chipping that may result from mishandling.
- Larger tiles will require assistance when lifting.

Guarantee

AI Fresco tiles have a 10 year structural guarantee. We warrant that the structural integrity of the product will not fail, under normal conditions, within a period of 10 years from date of purchase. Because specific installation details, structural design and environmental conditions are beyond the control of the Company, we cannot accept responsibility for the improper installation and/or care and maintenance of our products after they are installed. However, in the event of latent defects in the product caused by improper manufacturing, the Company will replace any defective product, provided the Company is notified in writing. The Company will also not be responsible if tiles are installed with a visible defect. The Company must pre-approve the cost of the replacement, in writing, prior to commencement of any warranty work.

Goods

We take care to ensure that all of our Goods leave us in perfect condition. All orders must be examined on delivery and any shortages, damages or other discrepancies should be brought to the supplier's attention before installation. Confirm that all products have been inspected and approved before installation begins, as the installation of the product signifies acceptance.

Slip resistance

R Ratings are determined via testing in accordance with DIN 51130:2004, which is the "Testing of floor coverings; determination of the anti-slip properties; workrooms and fields of activities with slip danger; walking method; ramp test German National standard 2004". This is fully recognised and adopted in the UK. The "R" values range from R9, which has a small degree of slip resistance, up to R13 which is the highest slip resistance. R9 & R10 ratings are suitable for indoor domestic areas, whereas R11 ratings and above are also suitable for external applications.

BY VERONA
Al Fresco

OUTDOOR
PREMIUM
PORCELAIN

alfrescotiles.co.uk



Please note that product images are shown for indicative purposes only and colour reproduction throughout this catalogue is as accurate as printing techniques allow. Although we endeavour to communicate any changes as soon as possible, we reserve the right to amend or withdraw products contained within this catalogue at any time without prior notice.

As variations in colour, shading and texture may occur between different batches of tiles, we recommend you purchase sufficient tiles in one go to complete a project. Please ensure a satisfactory blend of shades can be achieved BEFORE fixing as claims relating to variations that were apparent before fixing will not be accepted once the tiles have been installed.

www.alfrescotiles.co.uk | 0113 244 4984 | info@alfrescotiles.co.uk

VERONA

July 2023 | www.veronagroup.co.uk

Al Fresco is exclusively supplied and distributed by Verona Group, Lumina, Park Approach, Thorpe Park, Leeds, West Yorkshire, LS15 8GB